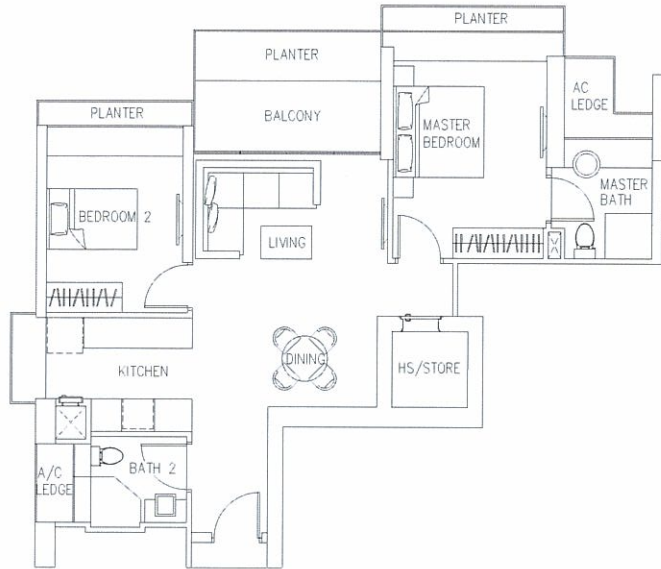
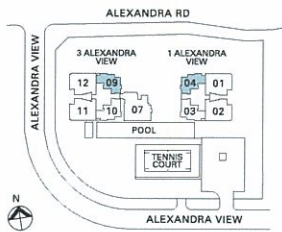


2-BEDROOM NORTH FACING (TANGLIN / ORCHARD)

TYPE B1
89 sqm (958 sq ft)
#04-04 – #06-04
#08-04 – #11-04
#04-09 – #06-09*
#18-09 – #21-09* #20-09

TYPE B1-4
89 sqm (958 sq ft)
#27-04 – #30-04
#37-09 – #40-09*

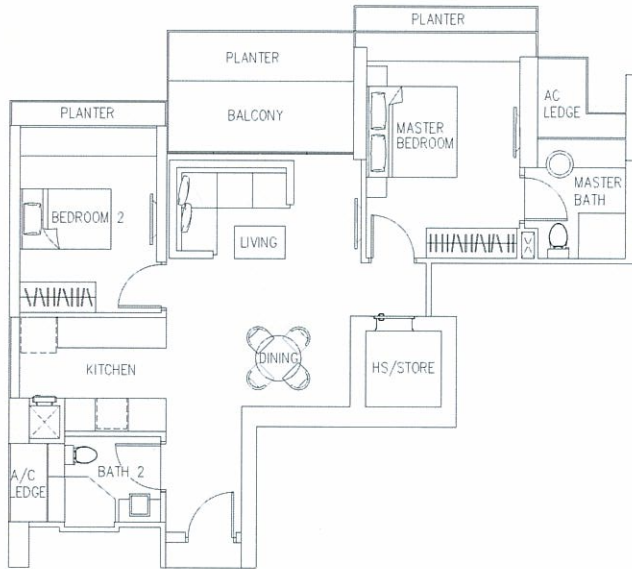
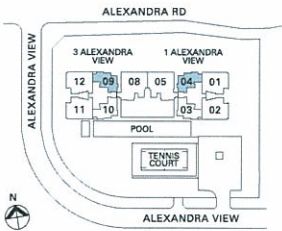
*(Mirror Image)



TYPE B1-1
88 sqm (947 sq ft)
#03-04
#12-04 – #21-04 #13-04, #20-04
#07-09 – #16-09* #13-09

TYPE B1-5
88 sqm (947 sq ft)
#31-04 – #40-04 #36-04
#26-09 – #35-09*

*(Mirror Image)



The above plans are not to scale and subject to any amendments as may be approved by the relevant authorities. All apartment areas are approximate of typical plans and are subject to final survey and column sizes may vary. The developer and its agents cannot be held liable for any inaccuracies. All external elevations/facades of the apartment including but not limited to solid walls, sliding or swing glass doors, windows and/or bay windows with fixed glass panels, sliding or casement glass panels, and/or any other features relevant to the facades are positioned, installed and/or subject to random/rhythmic combination of architectural treatments. As such, the external elevations/facades/features/installations are modular and all apartments vary in some way or another.

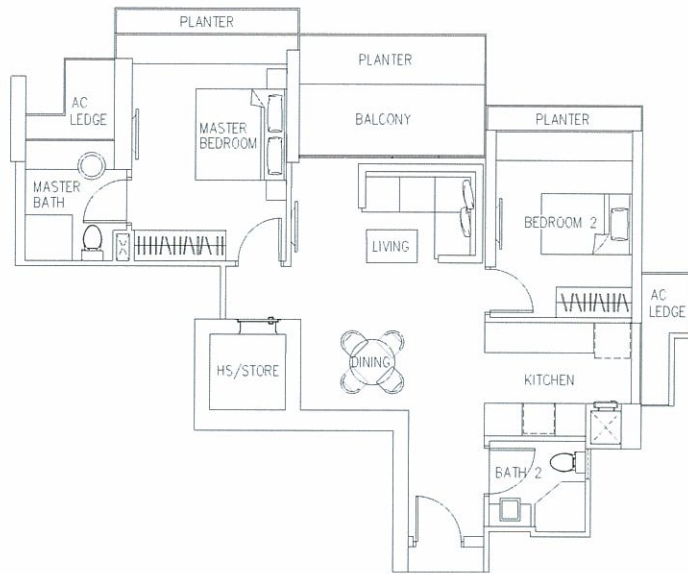
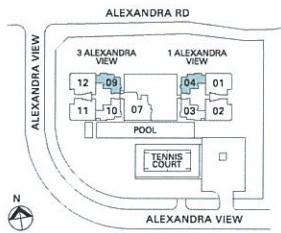
2-BEDROOM

NORTH FACING (TANGLIN / ORCHARD)

TYPE B1-2
89 sqm (958 sq ft)
#03-09

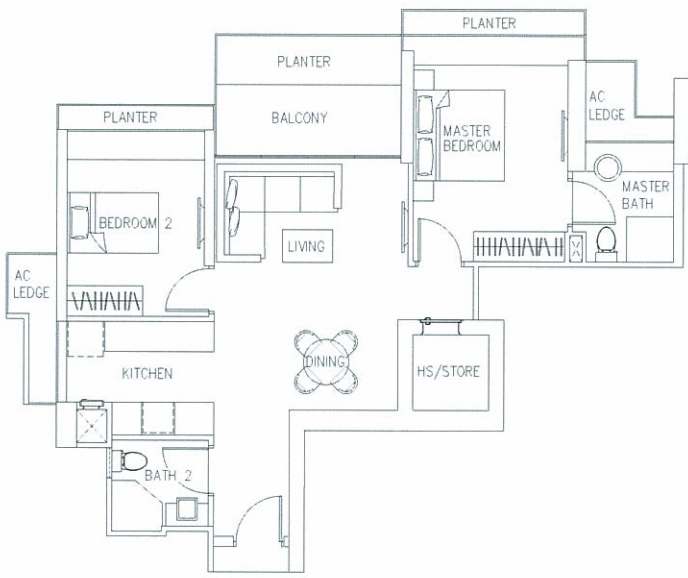
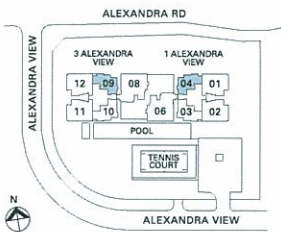
TYPE B1-6
89 sqm (958 sq ft)
#26-04*
#36-09

*(Mirror Image)



TYPE B1-3
89 sqm (958 sq ft)
#07-04
#17-09*

*(Mirror Image)



The above plans are not to scale and subject to any amendments as may be approved by the relevant authorities. All apartment areas are approximate of typical plans and are subject to final survey and column sizes may vary. The developer and its agents cannot be held liable for any inaccuracies. All external elevations/facades of the apartment, including but not limited to solid walls, sliding or swing glass doors, windows and/or bay windows with fixed glass panels, sliding or casement glass panels, and/or any other features relevant to the facades are positioned, installed and/or subject to random/rhythmic combination of architectural treatments. As such, the external elevations/facades/features/installations are modular and all apartments vary in some way or another.

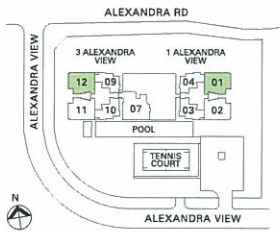
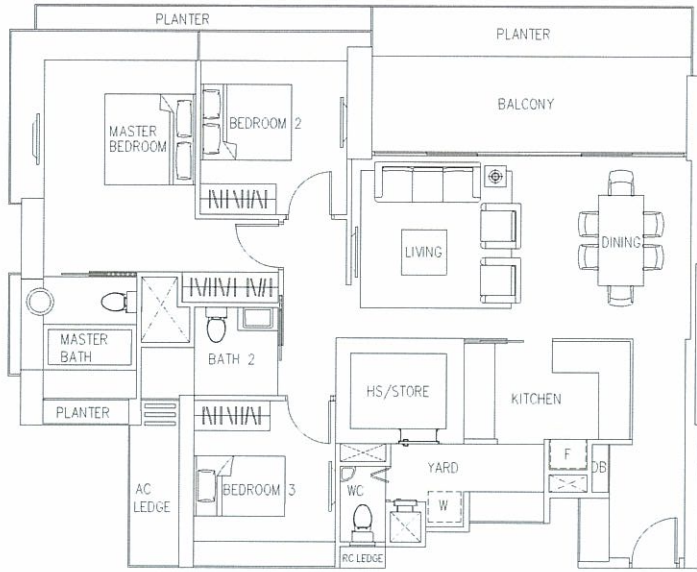
3-BEDROOM

NORTH FACING (TANGLIN / ORCHARD)

TYPE C1
 137 sqm (1,475 sq ft)
 #03-01 - #21-01* #13-01, #20-01
 #03-12 - #21-12 #13-12, #20-12

TYPE C1-2
 137 sqm (1,475 sq ft)
 #26-01 - #40-01* #36-01
 #26-12 - #40-12 #36-12

*(Mirror Image)



The above plans are not to scale and subject to any amendments as may be approved by the relevant authorities. All apartment areas are approximate of typical plans and are subject to final survey and column sizes may vary. The developer and its agents cannot be held liable for any inaccuracies. All external elevations/facades of the apartment including but not limited to solid walls, sliding or swing glass doors, windows and/or bay windows with fixed glass panels, sliding or casement glass panels, and/or any other features relevant to the facades are positioned, installed and/or subject to random/rhythmic combination of architectural treatments. As such, the external elevations/facades/features/installations are modular and all apartments vary in some way or another.