

Site Plan



Diagrammatic Chart

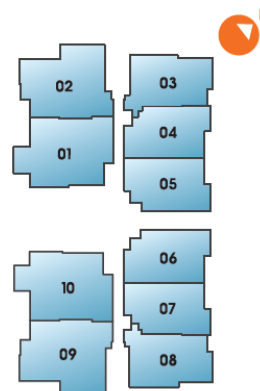


Diagrammatic Chart

Unit/ Storey	01	02	03	04	05	06	07	08	09	10
Attic										
5	#05-01 3BR-A	#05-02 3BR-B	#05-03 2BR-C3	#05-04 2BR-C1	#05-05 2BR-C2	#05-06 2BR-C2	#05-07 2BR-C1	#05-08 2BR-C3	#05-09 3BR-B	#05-10 3BR-A
4	#04-01 2BR-A	#04-02 2BR-B	#04-03 1BR-B	#04-04 1BR-A1	#04-05 1BR-A2	#04-06 1BR-A2	#04-07 1BR-A1	#04-08 1BR-B	#04-09 2BR-B	#04-10 2BR-A
3	#03-01 2BR-A	#03-02 2BR-B	#03-03 1BR-B	#03-04 1BR-A1	#03-05 1BR-A2	#03-06 1BR-A2	#03-07 1BR-A1	#03-08 1BR-B	#03-09 2BR-B	#03-10 2BR-A
2	#02-01 2BR-A	#02-02 2BR-B	#02-03 1BR-B	#02-04 1BR-A1	#02-05 1BR-A2	#02-06 1BR-A2	#02-07 1BR-A1	#02-08 1BR-B	#02-09 2BR-B	#02-10 2BR-A
1	#01-01 2BR-A1 (GRU)	#01-02 2BR-B1 (GRU)		#01-04 1BR-A1 (GRU)	#01-05 1BR-A2 (GRU)	#01-06 1BR-A2 (GRU)	#01-07 1BR-A1 (GRU)			

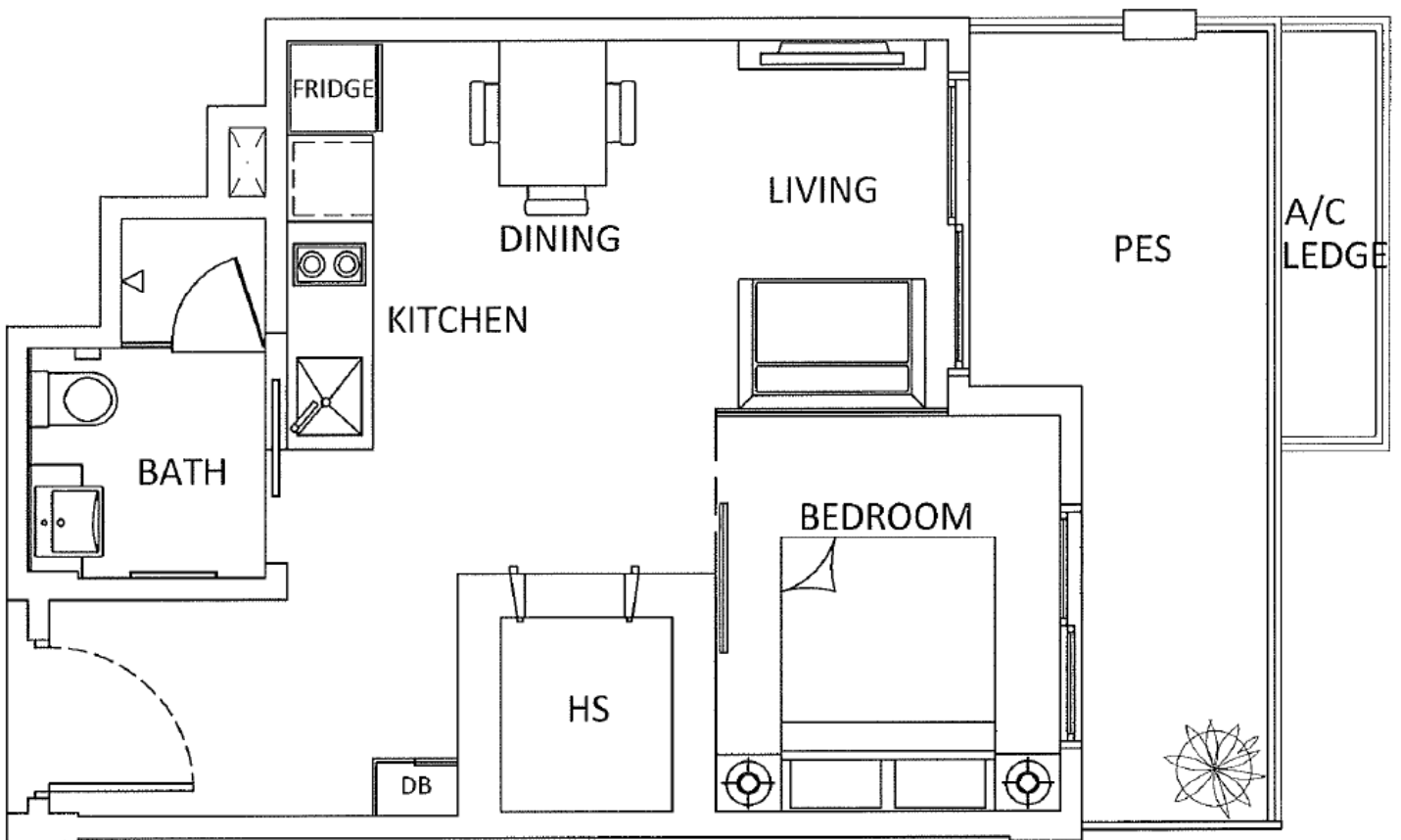
Legend

- 1 bedroom
- 2 bedroom
- 2 bedroom Penthouse
- 3 bedroom Penthouse



Floor Plan – 1 Bedroom (Type 1BR-A1 Ground Floor Unit)

Units: #01-04, #01-07*
Area: 48 sqm/ 517 sqft

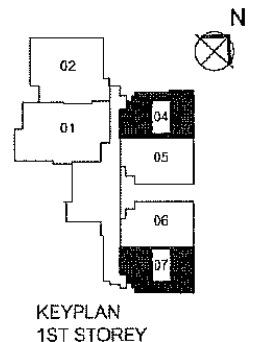


- * mirror image

- Area includes, A/C ledge, balcony, roof terrace, PES and void. Some units are mirror images as shown in the brochure. Please refer to the key plans for orientations.

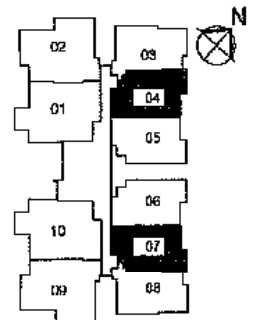
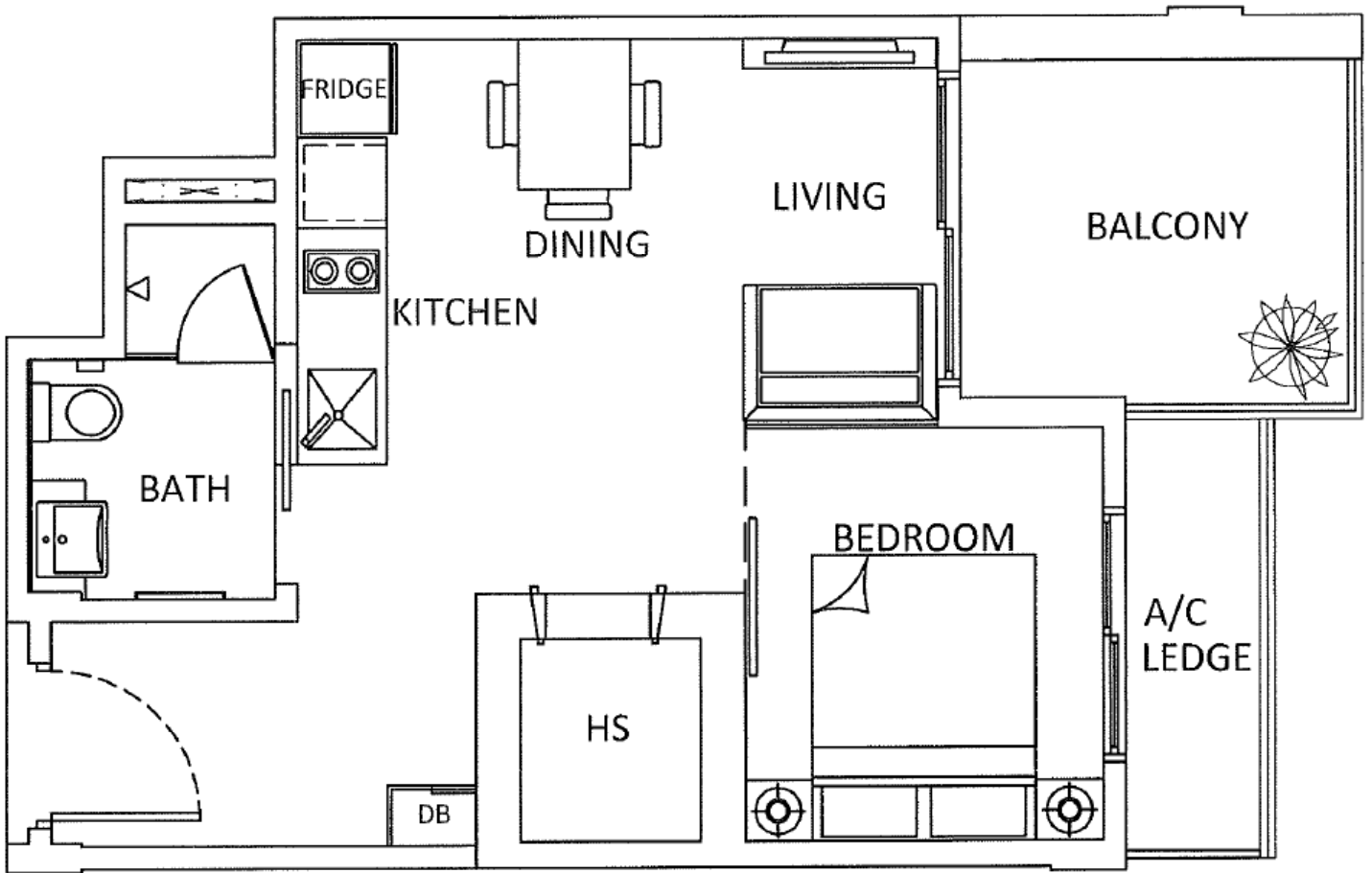
All plans are subject to changes as may be approved by the relevant authorities. All floor areas are approximate measurements only and are subject to final survey.

Abbreviation: A/C (air-con ledge), HS (Household Shelter), PES (Private Enclosed Space), DB (Distribution Board)



Floor Plan – 1 Bedroom (Type 1BR-A1 Typical Unit)

Units: #02-04 #02-07*
 #03-04 #03-07*
 #04-04 #04-07*
 Area: 45 sqm/ 484 sqft



- * mirror image

- Area includes, A/C ledge, balcony, roof terrace, PES and void. Some units are mirror images as shown in the brochure. Please refer to the key plans for orientations.

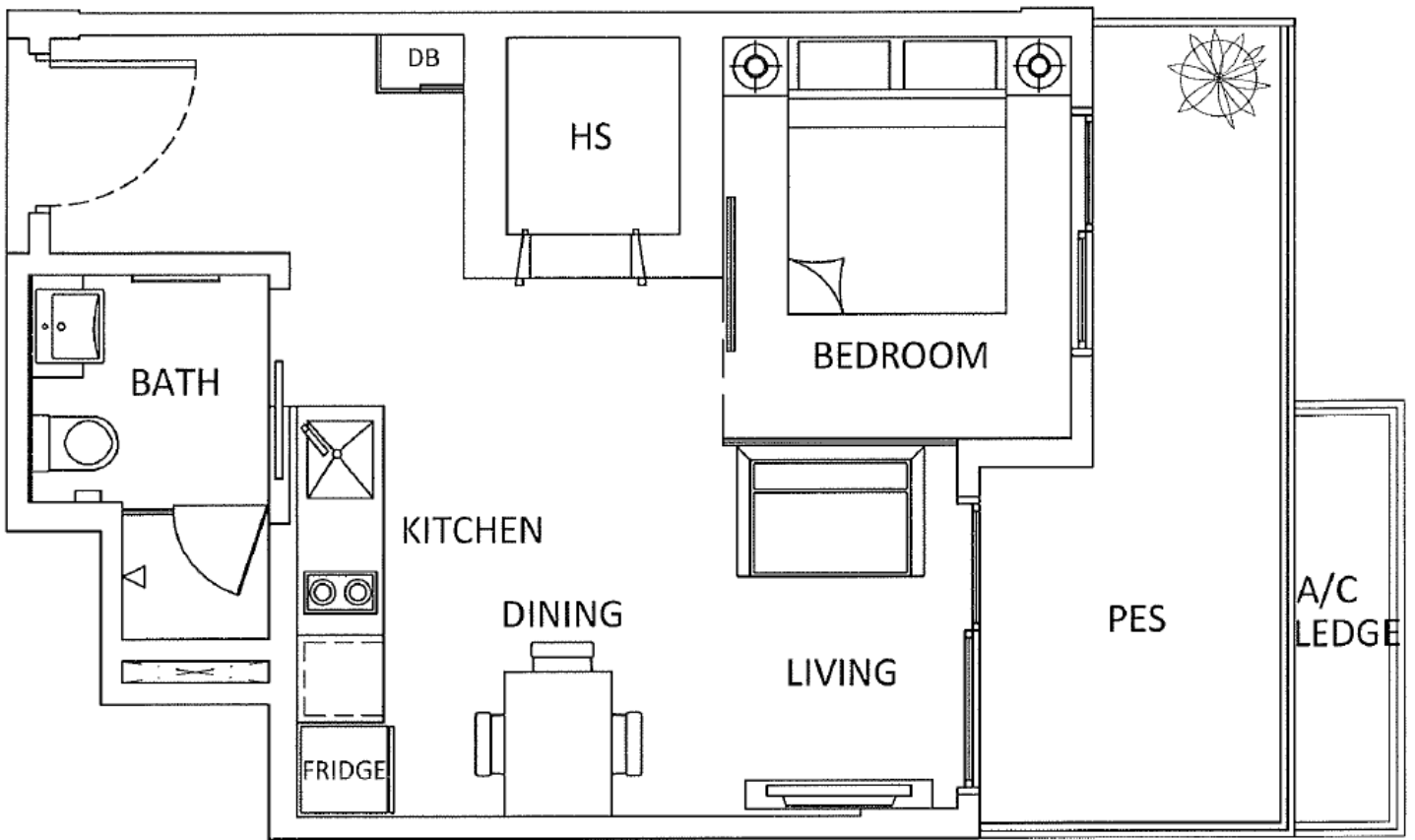
All plans are subject to changes as may be approved by the relevant authorities. All floor areas are approximate measurements only and are subject to final survey.

Abbreviation: A/C (air-con ledge), HS (Household Shelter), PES (Private Enclosed Space), DB (Distribution Board)

KEYPLAN
2ND STOREY TO 4TH STOREY

Floor Plan – 1 Bedroom (Type 1BR-A2 Ground Floor Unit)

Units: #01-05, #01-06*
Area: 48 sqm/ 517 sqft

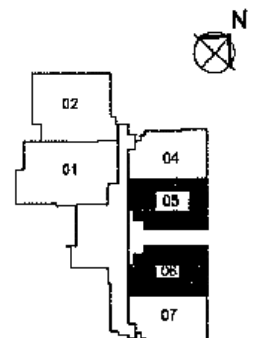


- * mirror image

- Area includes, A/C ledge, balcony, roof terrace, PES and void. Some units are mirror images as shown in the brochure. Please refer to the key plans for orientations.

All plans are subject to changes as may be approved by the relevant authorities. All floor areas are approximate measurements only and are subject to final survey.

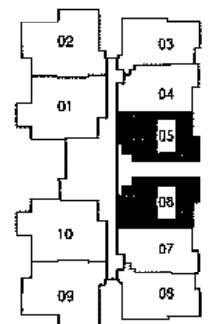
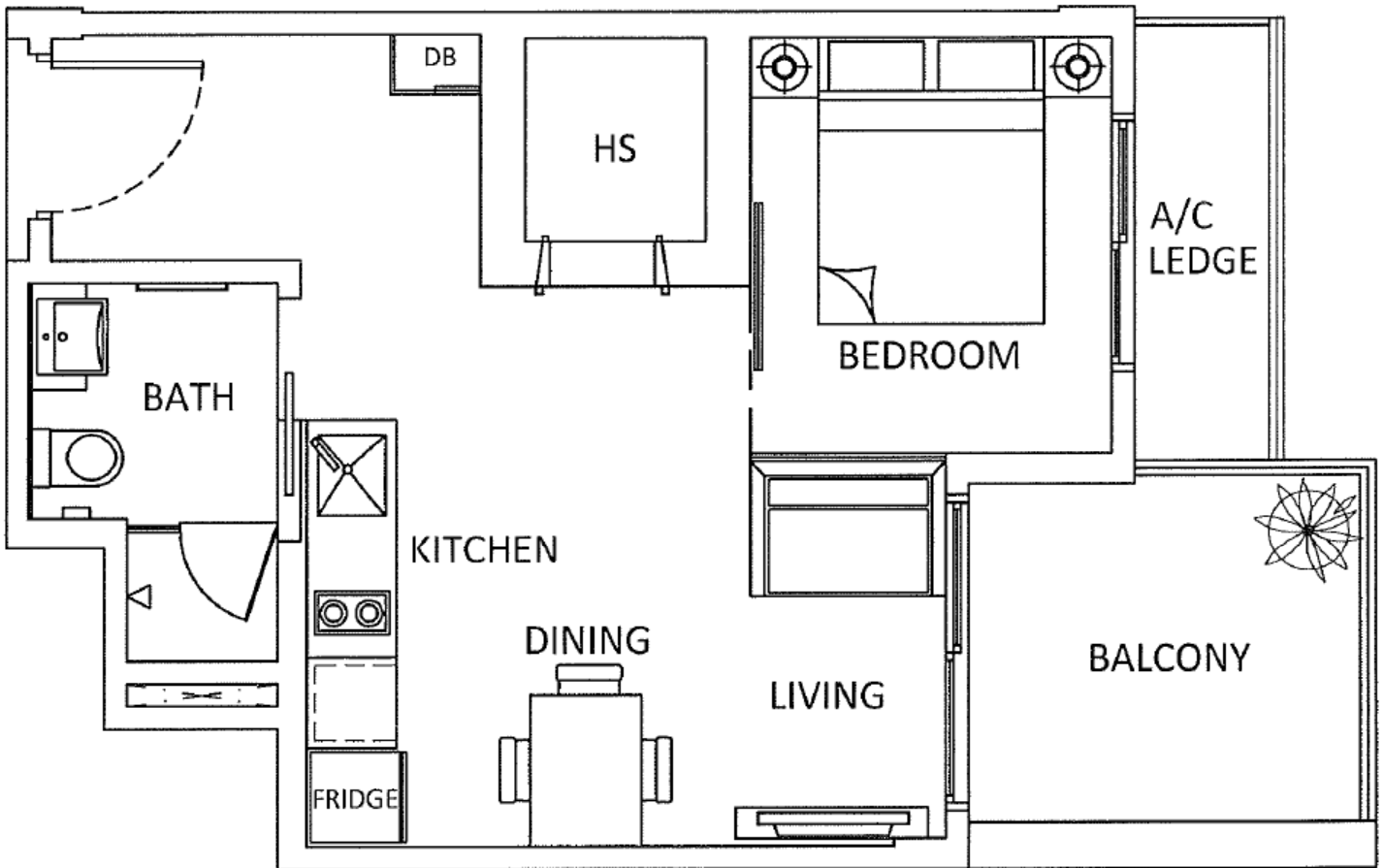
Abbreviation: A/C (air-con ledge), HS (Household Shelter), PES (Private Enclosed Space), DB (Distribution Board)



KEYPLAN
1ST STOREY

Floor Plan – 1 Bedroom (Type 1BR-A2 Typical Unit)

Units: #02-05 #02-06*
 #03-05 #03-06*
 #04-05 #04-06*
 Area: 45 sqm/ 484 sqft



KEYPLAN
2ND TO 4TH STOREY

- * mirror image

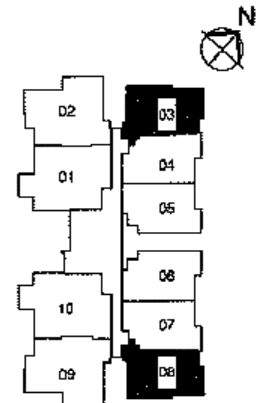
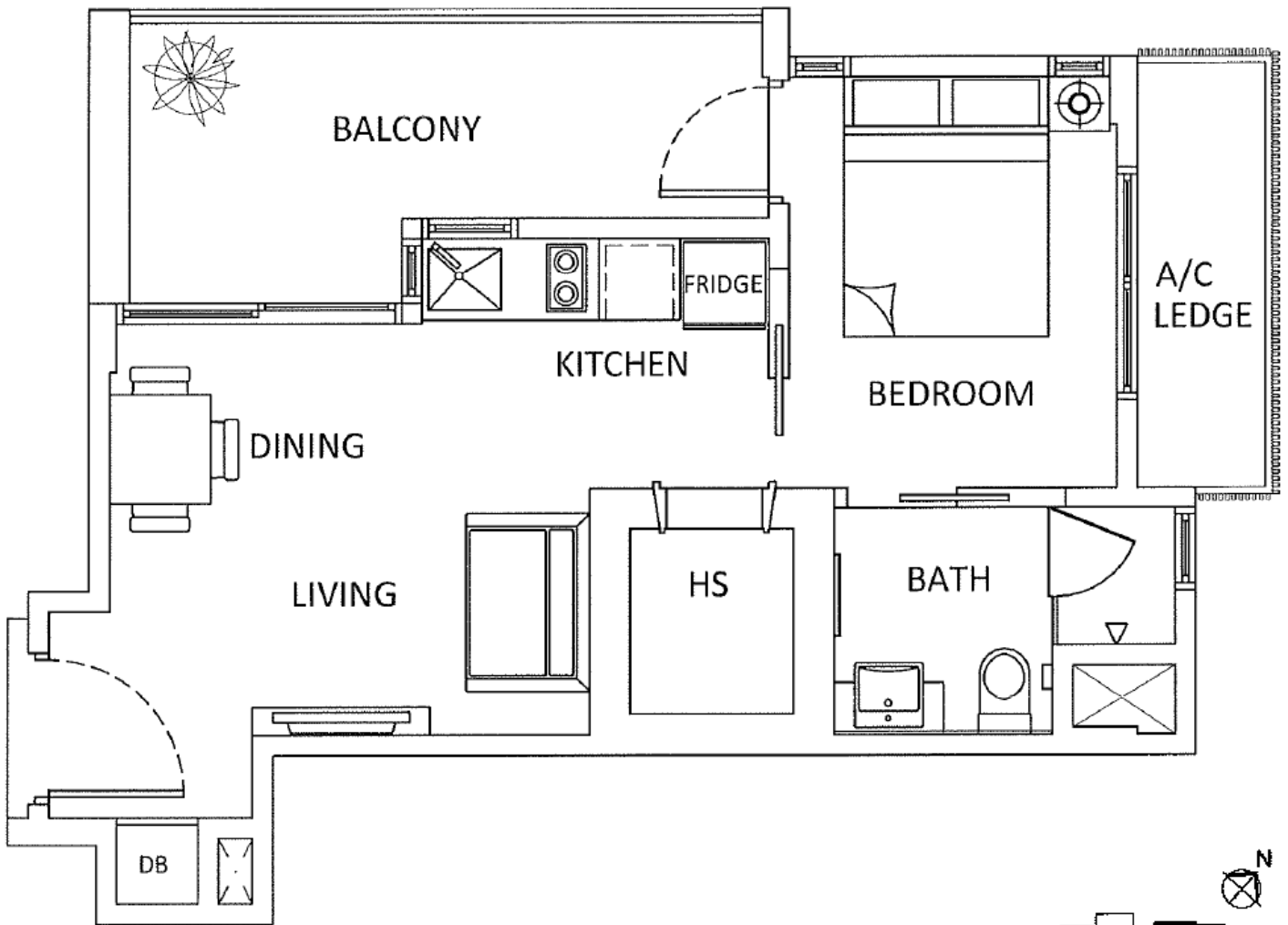
- Area includes, A/C ledge, balcony, roof terrace, PES and void. Some units are mirror images as shown in the brochure. Please refer to the key plans for orientations.

All plans are subject to changes as may be approved by the relevant authorities. All floor areas are approximate measurements only and are subject to final survey.

Abbreviation: A/C (air-con ledge), HS (Household Shelter), PES (Private Enclosed Space), DB (Distribution Board)

Floor Plan – 1 Bedroom (Type 1BR-B Typical Unit)

Units: #02-03 #02-08*
 #03-03 #03-08*
 #04-03 #04-08*
 Area: 45 sqm/ 484 sqft



KEYPLAN
2ND TO 4TH STOREY

- * mirror image

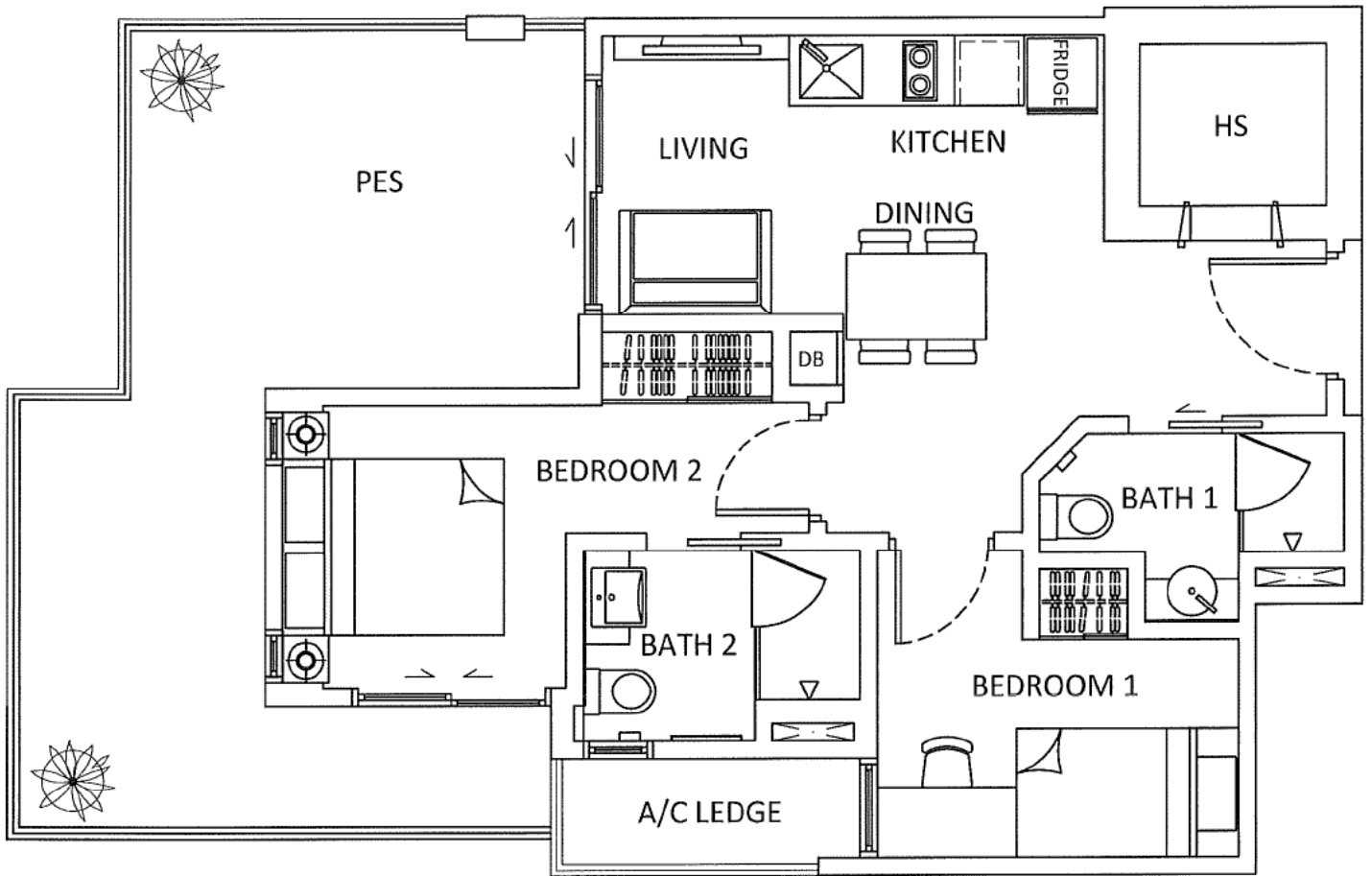
- Area includes, A/C ledge, balcony, roof terrace, PES and void. Some units are mirror images as shown in the brochure. Please refer to the key plans for orientations.

All plans are subject to changes as may be approved by the relevant authorities. All floor areas are approximate measurements only and are subject to final survey.

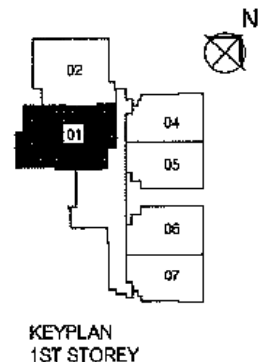
Abbreviation: A/C (air-con ledge), HS (Household Shelter), PES (Private Enclosed Space), DB (Distribution Board)

Floor Plan – 2 Bedroom (Type 2BR-A1 Ground Floor Unit)

Units: #01-01
Area: 76 sqm/ 818 sqft

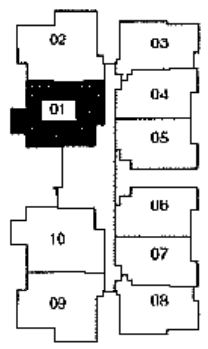
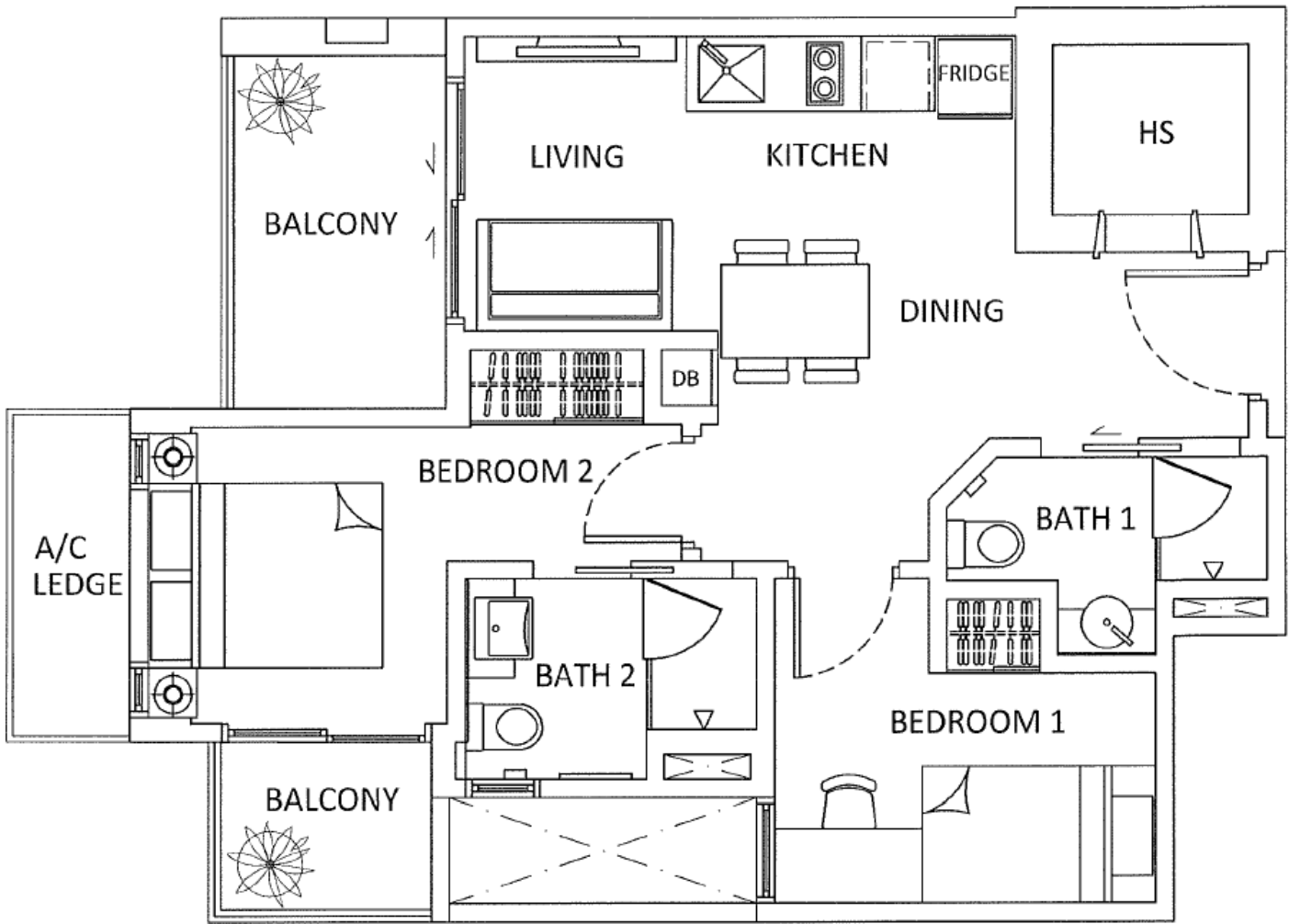


- * mirror image
- Area includes, A/C ledge, balcony, roof terrace, PES and void. Some units are mirror images as shown in the brochure. Please refer to the key plans for orientations.
All plans are subject to changes as may be approved by the relevant authorities. All floor areas are approximate measurements only and are subject to final survey.
Abbreviation: A/C (air-con ledge), HS (Household Shelter), PES (Private Enclosed Space), DB (Distribution Board)



Floor Plan – 2 Bedroom (Type 2BR-A Typical Unit)

Units: #02-01
 #03-01
 #04-01
 Area: 61 sqm/ 657 sqft

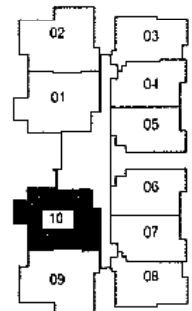
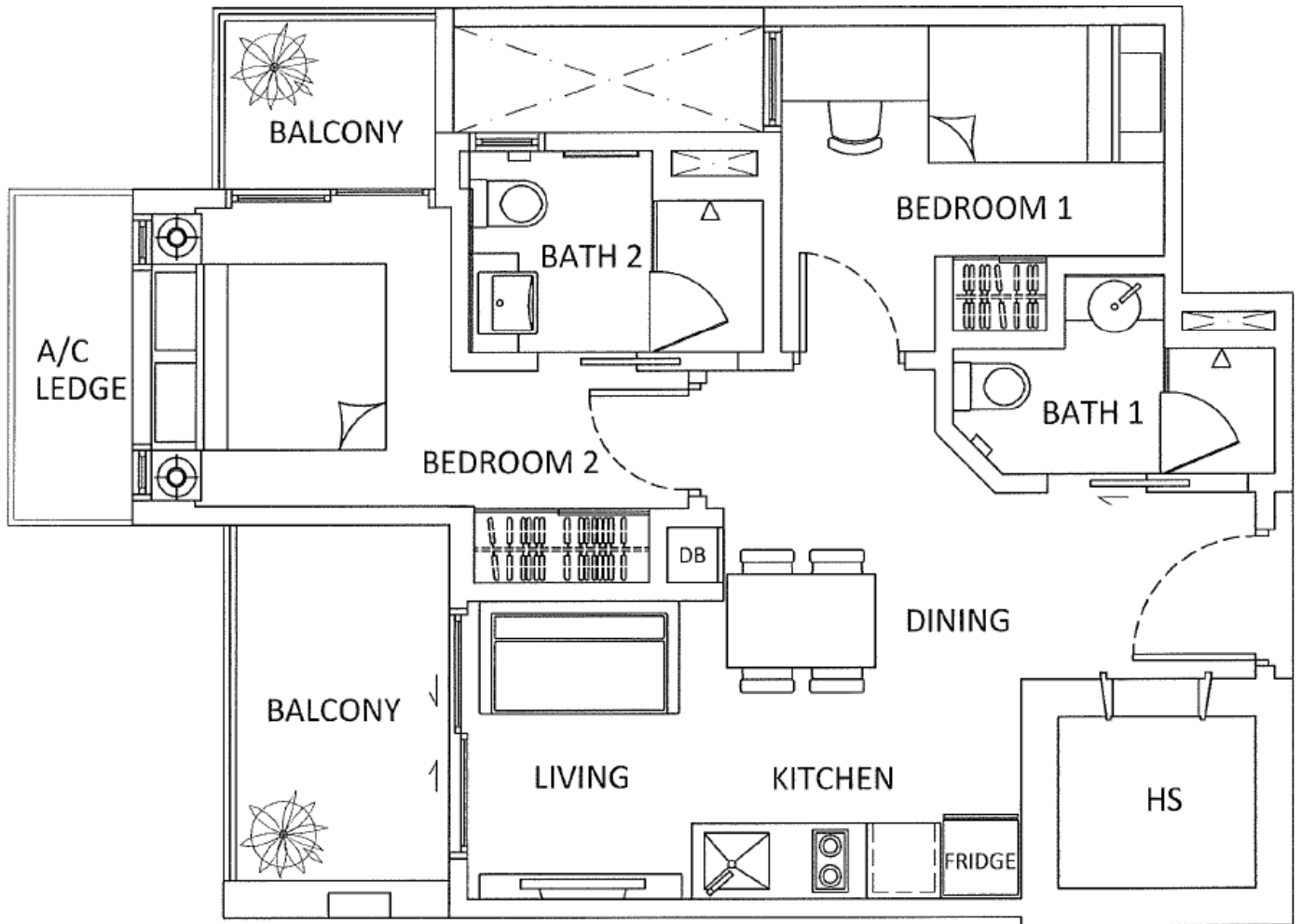


KEYPLAN
2ND TO 4TH STOREY

- Area includes, A/C ledge, balcony, roof terrace, PES and void. Some units are mirror images as shown in the brochure. Please refer to the key plans for orientations.
 All plans are subject to changes as may be approved by the relevant authorities. All floor areas are approximate measurements only and are subject to final survey.
 Abbreviation: A/C (air-con ledge), HS (Household Shelter), PES (Private Enclosed Space), DB (Distribution Board)

Floor Plan – 2 Bedroom (Type 2BR-A Typical Unit)

Units: #02-10
 #03-10
 #04-10
 Area: 60 sqm/ 646 sqft



KEYPLAN
 2ND TO 4TH STOREY

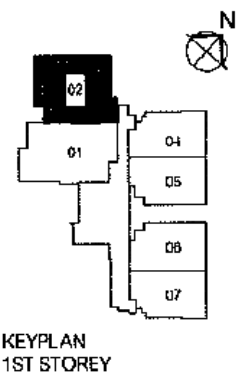
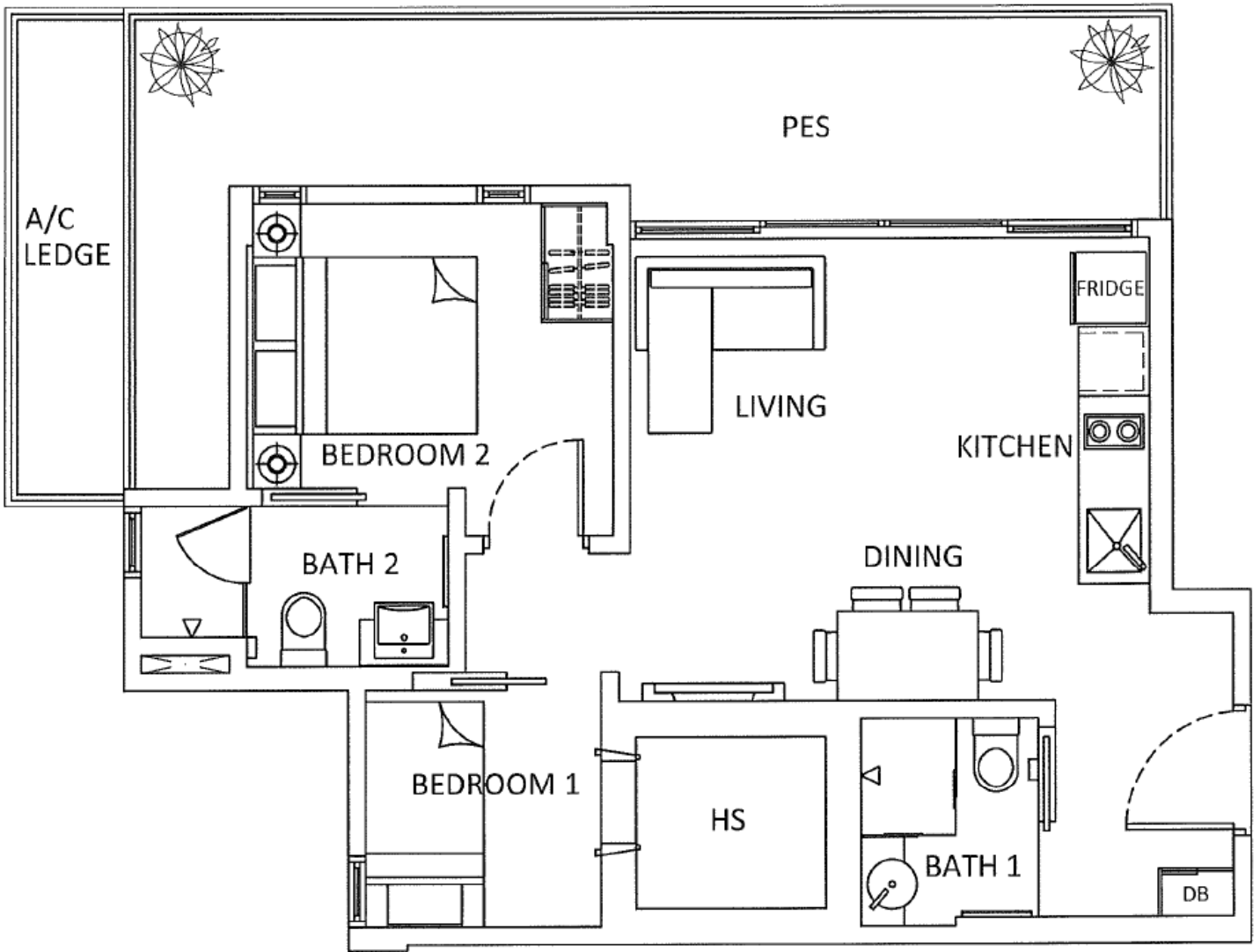
- Area includes, A/C ledge, balcony, roof terrace, PES and void. Some units are mirror images as shown in the brochure. Please refer to the key plans for orientations.

All plans are subject to changes as may be approved by the relevant authorities. All floor areas are approximate measurements only and are subject to final survey.

Abbreviation: A/C (air-con ledge), HS (Household Shelter), PES (Private Enclosed Space), DB (Distribution Board)

Floor Plan – 2 Bedroom (Type 2BR-B1 Ground Floor Unit)

Units: #01-02
Area: 69 sqm/ 743 sqft



- Area includes, A/C ledge, balcony, roof terrace, PES and void. Some units are mirror images as shown in the brochure. Please refer to the key plans for orientations.

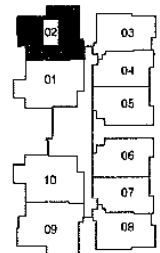
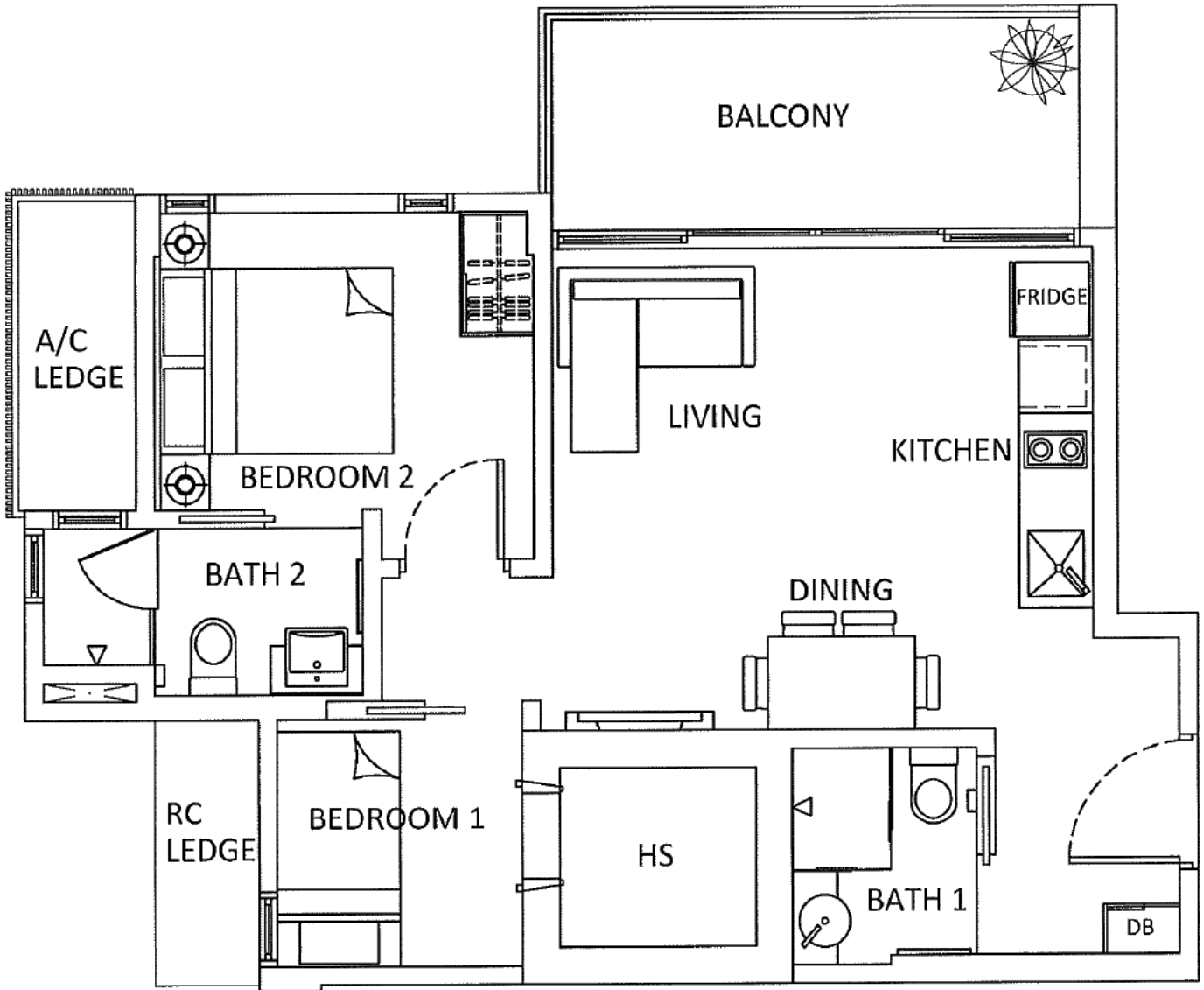
All plans are subject to changes as may be approved by the relevant authorities. All floor areas are approximate measurements only and are subject to final survey.

Abbreviation: A/C (air-con ledge), HS (Household Shelter), PES (Private Enclosed Space), DB (Distribution Board)

Disclaimer: The information provided is subject to changes as may be required by the relevant authorities or developer, and it cannot be used to form part of the offer and/or contract. All information provided has been treated with care and the developer and/or marketing agent should not be liable for any inaccuracy.

Floor Plan – 2 Bedroom (Type 2BR-B Typical Unit)

Units: #02-02
 #03-02
 #04-02
 Area: 60 sqm/ 646 sqft



KEYPLAN
2ND TO 4TH STOREY

- Area includes, A/C ledge, balcony, roof terrace, PES and void. Some units are mirror images as shown in the brochure. Please refer to the key plans for orientations.

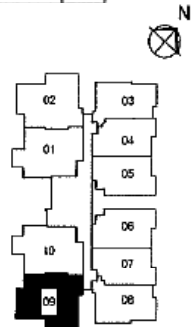
All plans are subject to changes as may be approved by the relevant authorities. All floor areas are approximate measurements only and are subject to final survey.

Abbreviation: A/C (air-con ledge), HS (Household Shelter), PES (Private Enclosed Space), DB (Distribution Board)

Disclaimer: The information provided is subject to changes as may be required by the relevant authorities or developer, and it cannot be used to form part of the offer and/or contract. All information provided has been treated with care and the developer and/or marketing agent should not be liable for any inaccuracy.

Floor Plan – 2 Bedroom (Type 2BR-B Typical Unit)

Units: #02-09
 #03-09
 #04-09
 Area: 59 sqm/ 635 sqft



- Area includes, A/C ledge, balcony, roof terrace, PES and void. Some units are mirror images as shown in the brochure. Please refer to the key plans for orientations.

All plans are subject to changes as may be approved by the relevant authorities. All floor areas are approximate measurements only and are subject to final survey.

Abbreviation: A/C (air-con ledge), HS (Household Shelter), PES (Private Enclosed Space), DB (Distribution Board)

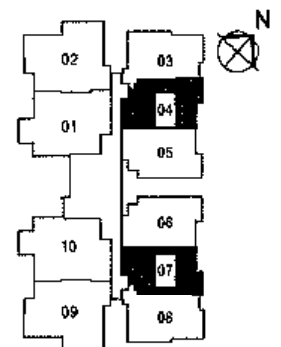
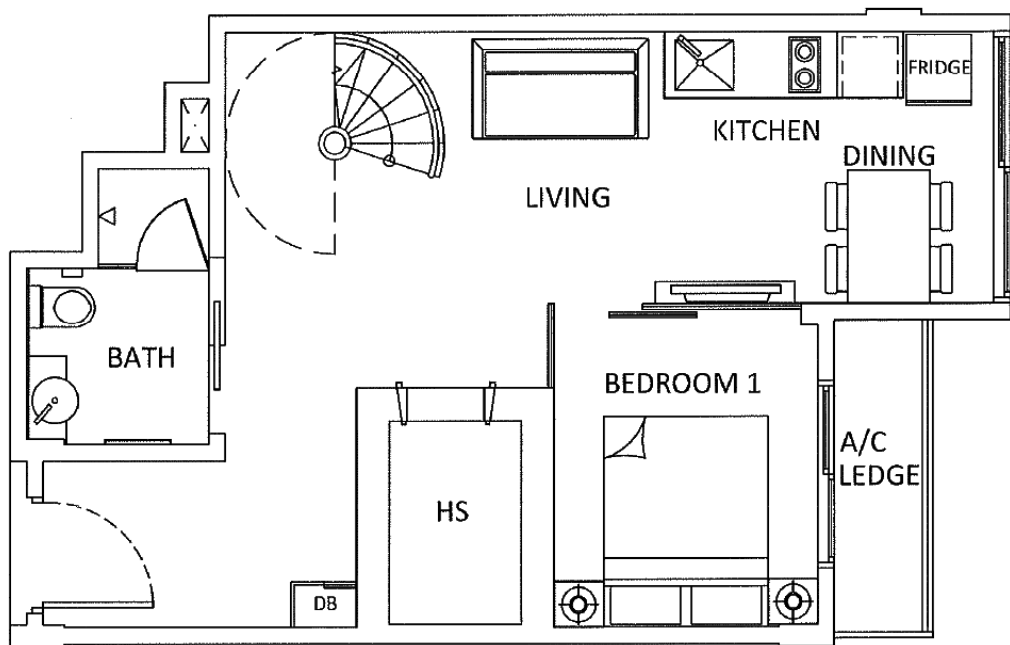
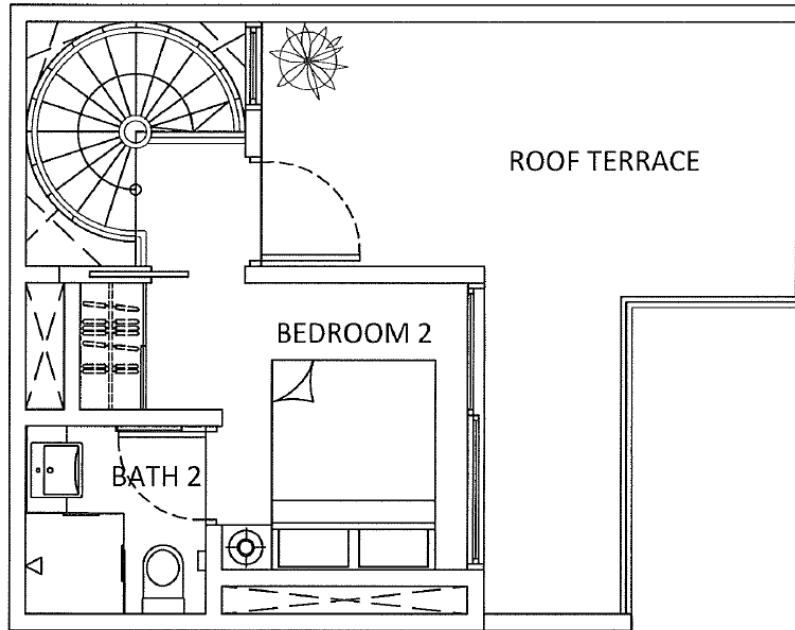
KEYPLAN
2ND TO 4TH STOREY

Disclaimer: The information provided is subject to changes as may be required by the relevant authorities or developer, and it cannot be used to form part of the offer and/or contract. All information provided has been treated with care and the developer and/or marketing agent should not be liable for any inaccuracy.

Floor Plan – 2 Bedroom Penthouse (Type 2BR-C1)

Units: #05-04, #05-07*

Area: 87 sqm/ 936 sqft (includes 11 sqm/ 118 sqft of void area)



KEYPLAN
5TH STOREY

- * mirror image

- Area includes, A/C ledge, balcony, roof terrace, PES and void. Some units are mirror images as shown in the brochure. Please refer to the key plans for orientations.

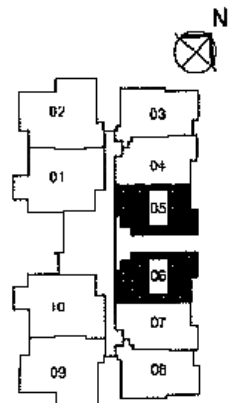
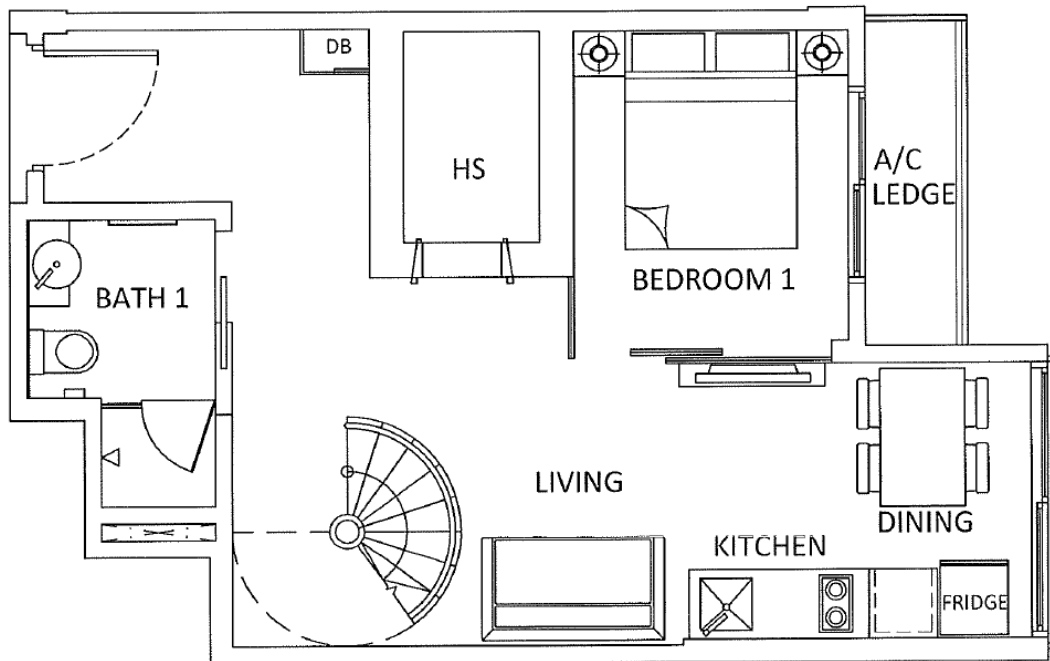
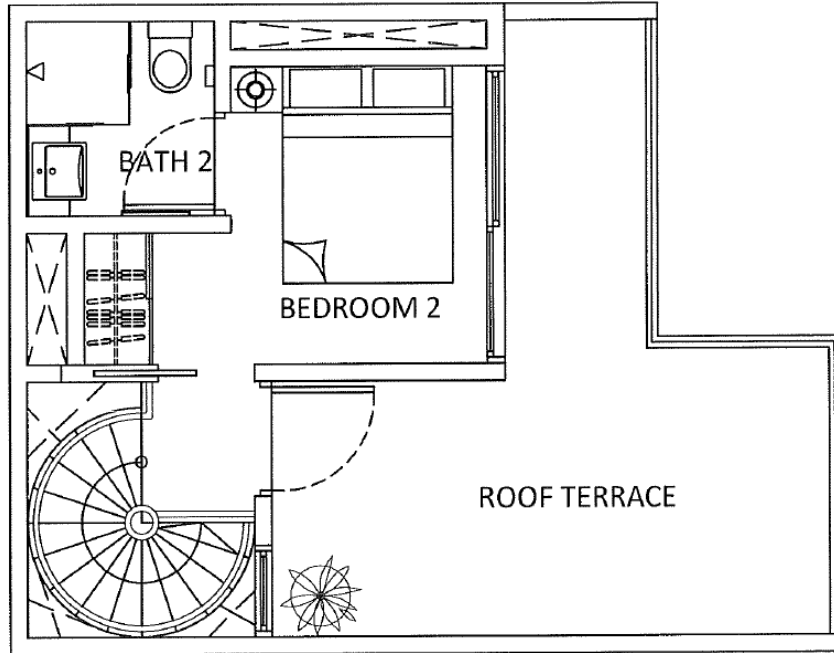
All plans are subject to changes as may be approved by the relevant authorities. All floor areas are approximate measurements only and are subject to final survey.

Abbreviation: A/C (air-con ledge), HS (Household Shelter), PES (Private Enclosed Space), DB (Distribution Board)

Disclaimer: The information provided is subject to changes as may be required by the relevant authorities or developer, and it cannot be used to form part of the offer and/or contract. All information provided has been treated with care and the developer and/or marketing agent should not be liable for any inaccuracy.

Floor Plan – 2 Bedroom Penthouse (Type 2BR-C2)

Units: #05-05, #05-06*
Area: 87 sqm/ 936 sqft (includes 11 sqm/ 118 sqft of void area)



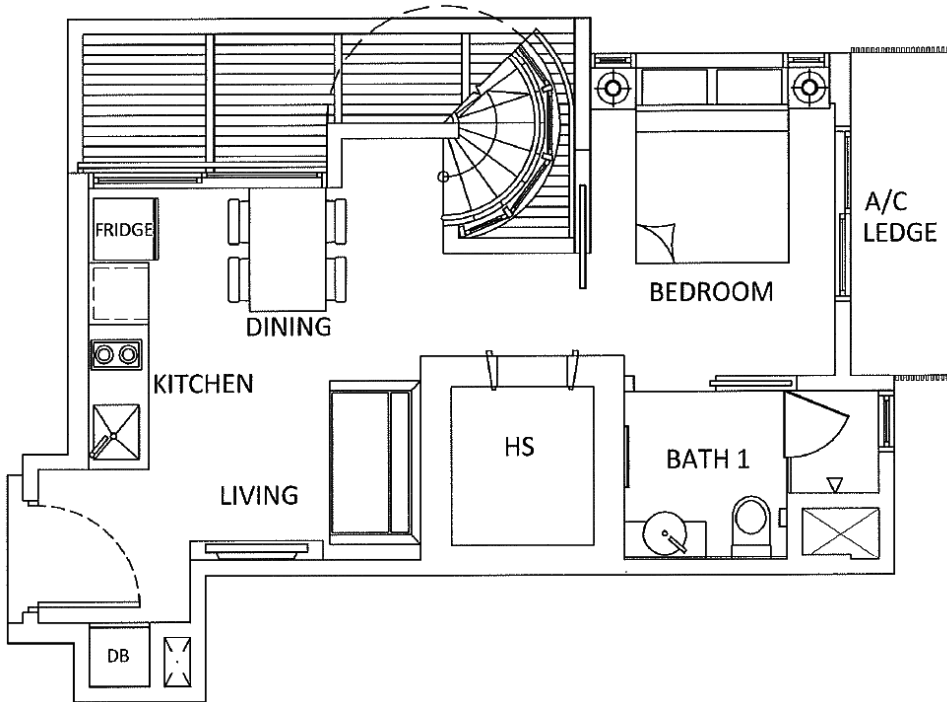
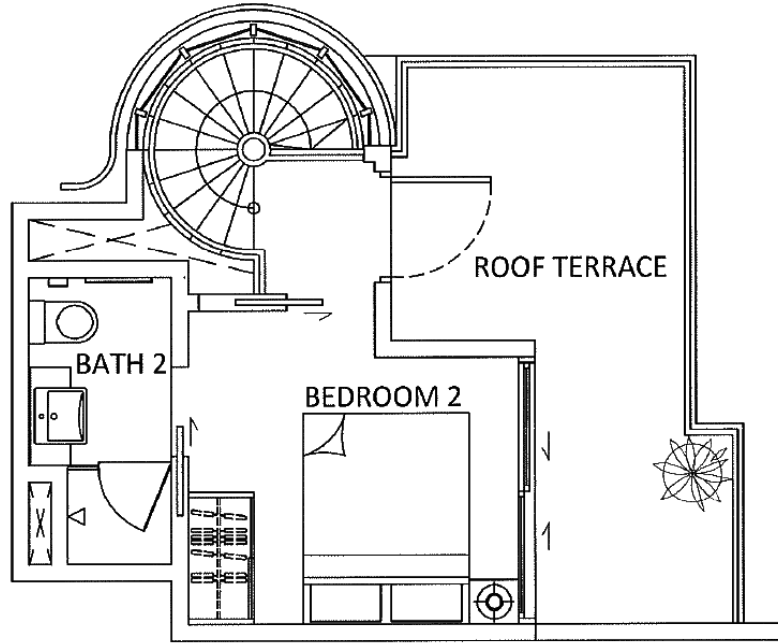
- * mirror image
- Area includes, A/C ledge, balcony, roof terrace, PES and void. Some units are mirror images as shown in the brochure. Please refer to the key plans for orientations.
All plans are subject to changes as may be approved by the relevant authorities. All floor areas are approximate measurements only and are subject to final survey.
Abbreviation: A/C (air-con ledge), HS (Household Shelter), PES (Private Enclosed Space), DB (Distribution Board)

KEYPLAN
5TH/ATTIC STOREY

Floor Plan – 2 Bedroom Penthouse (Type 2BR-C3)

Units: #05-03, #05-08*

Area: 79 sqm/ 850 sqft (includes 12 sqm/ 129 sqft of void area)

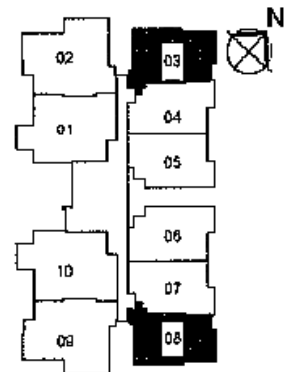


- * mirror image

- Area includes, A/C ledge, balcony, roof terrace, PES and void. Some units are mirror images as shown in the brochure. Please refer to the key plans for orientations.

All plans are subject to changes as may be approved by the relevant authorities. All floor areas are approximate measurements only and are subject to final survey.

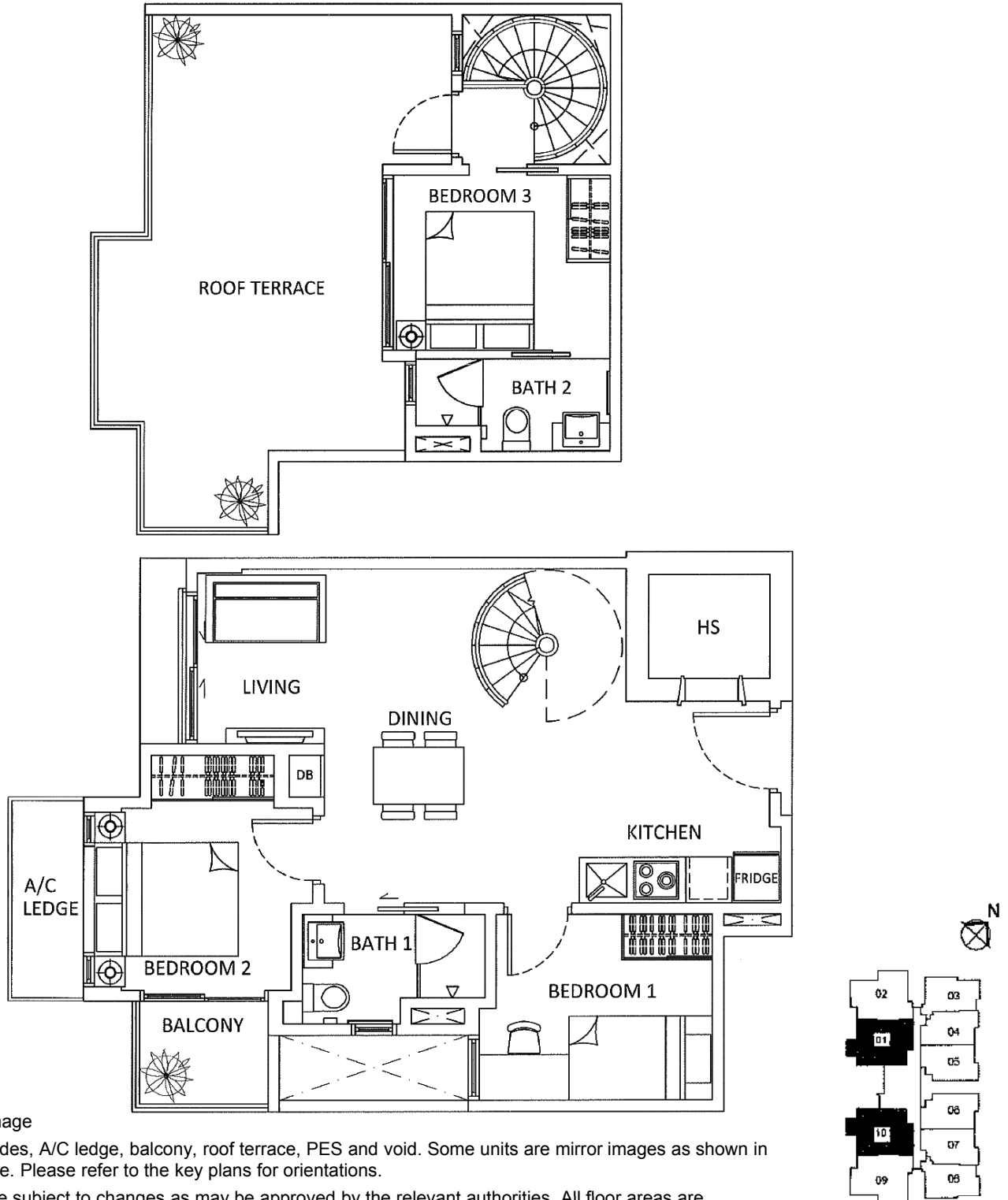
Abbreviation: A/C (air-con ledge), HS (Household Shelter), PES (Private Enclosed Space), DB (Distribution Board)



KEYPLAN
5TH STOREY

Floor Plan – 3 Bedroom Penthouse (Type 3BR-A)

Units: #05-01, #05-10*
 Area: 114 sqm/ 1227 sqft (includes 14 sqm/ 151 sqft of void area)



- * mirror image

- Area includes, A/C ledge, balcony, roof terrace, PES and void. Some units are mirror images as shown in the brochure. Please refer to the key plans for orientations.

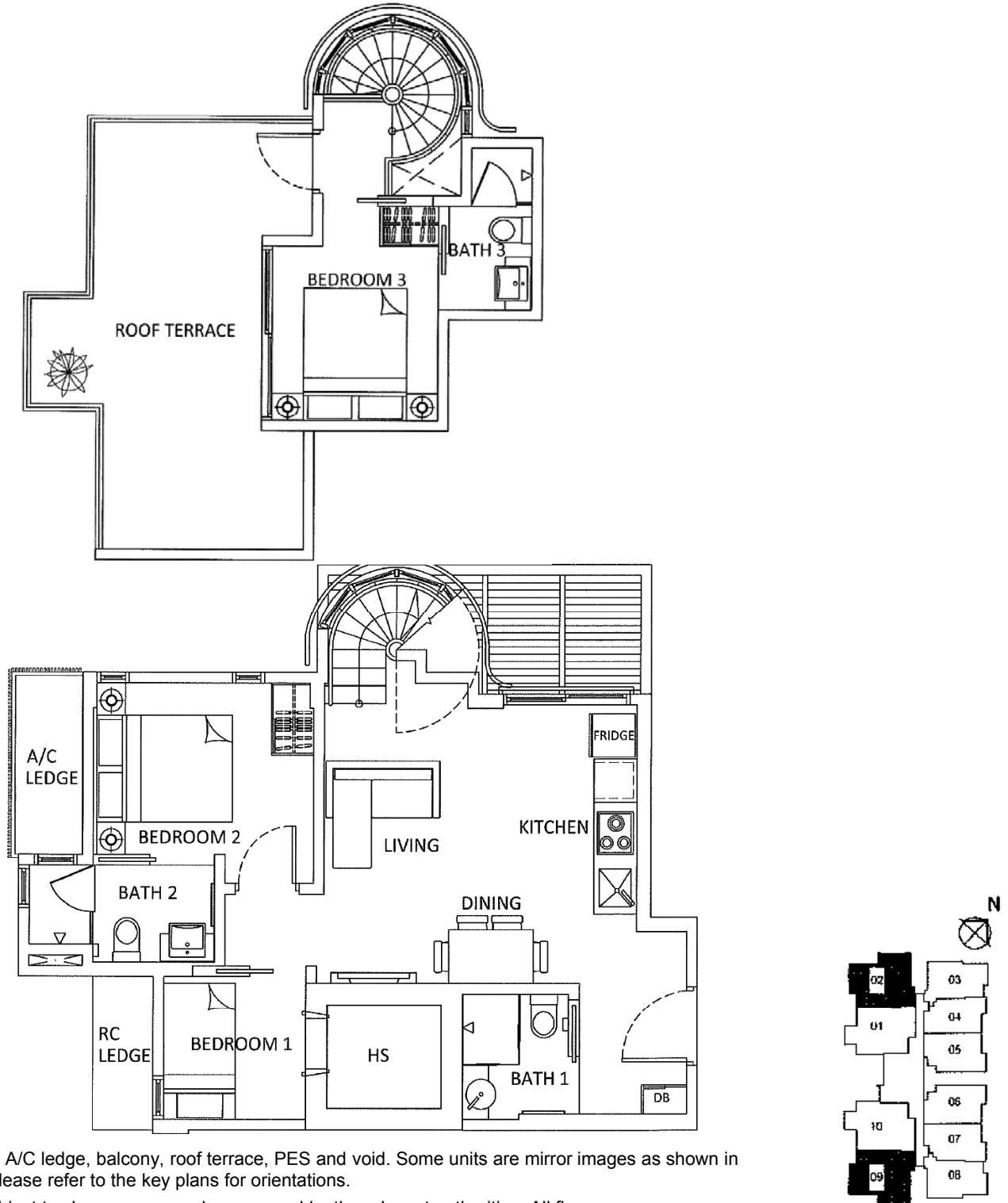
All plans are subject to changes as may be approved by the relevant authorities. All floor areas are approximate measurements only and are subject to final survey.

Abbreviation: A/C (air-con ledge), HS (Household Shelter), PES (Private Enclosed Space), DB (Distribution Board)

KEYPLAN
5TH/ATTIC STOREY

Floor Plan – 3 Bedroom Penthouse (Type 3BR-B)

Units: #05-02, #05-09*
Area: 110 sqm/ 1184 sqft (includes 18 sqm/ 194 sqft of void area)



- * mirror image
- Area includes, A/C ledge, balcony, roof terrace, PES and void. Some units are mirror images as shown in the brochure. Please refer to the key plans for orientations.
All plans are subject to changes as may be approved by the relevant authorities. All floor areas are approximate measurements only and are subject to final survey.
Abbreviation: A/C (air-con ledge), HS (Household Shelter), PES (Private Enclosed Space), DB (Distribution Board)

KEYPLAN
5TH/ATTIC STOREY